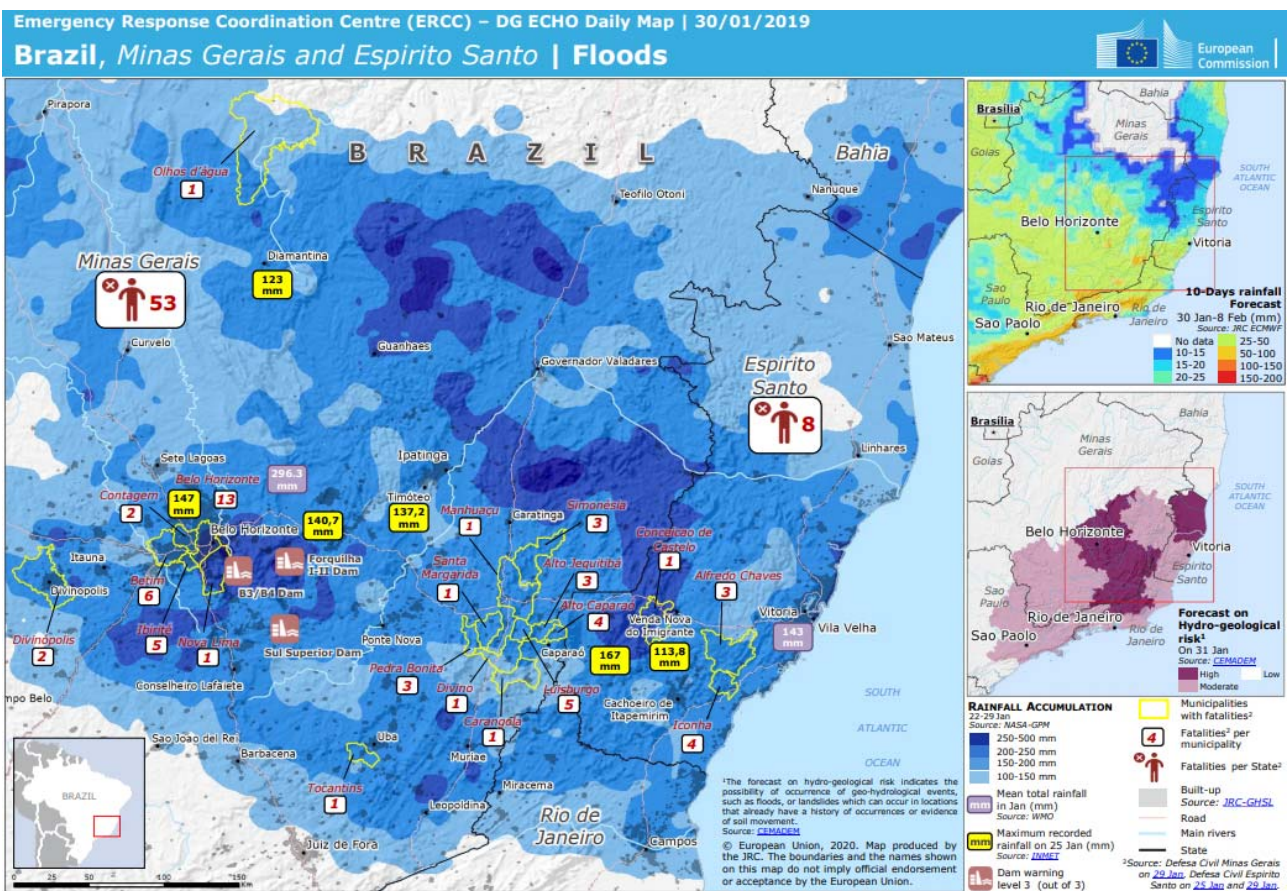


Brazil (Southeast) FLOODS

Affected Areas	Southeast Brazil	Death Toll	<div style="font-size: 2em; font-weight: bold; color: #0056b3;">64</div> Minas Gerais: 55 Espírito Santo: 9
	Minas Gerais State: Belo Horizonte, Betim, Ibirite, and Alto Caparaó Espírito Santo State: Iconha and Alfredo Chaves Rio de Janeiro State: Itaperuna		
Date of Occurrence	January 23, 2020	Missing	—
Outline	Record rainfall caused severe floods and landslides in southeast Brazil. Minas Gerais State declared emergency to 101 municipalities.		

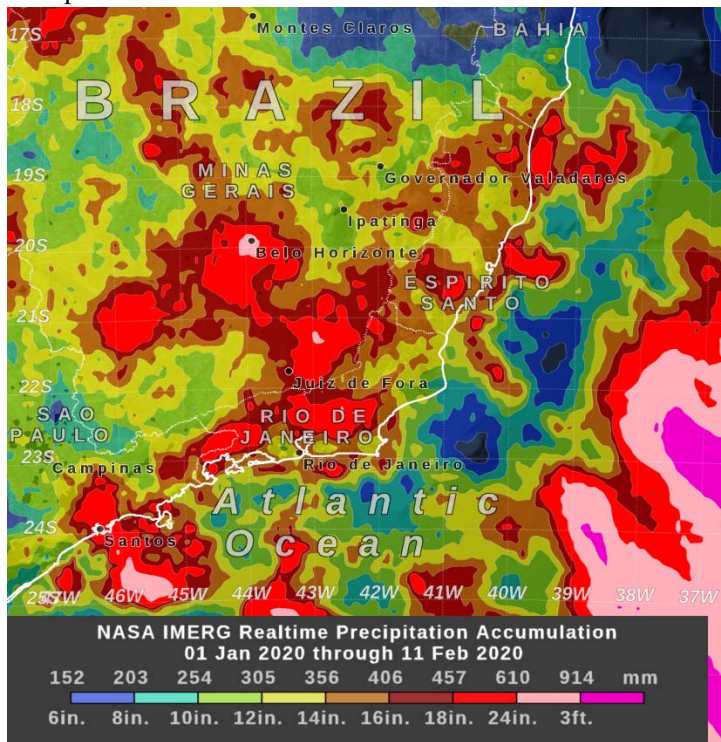
The above information is based on press release by media and government agencies.



Source: European Commission <https://erccportal.jrc.ec.europa.eu/getdailymap/docId/3211>

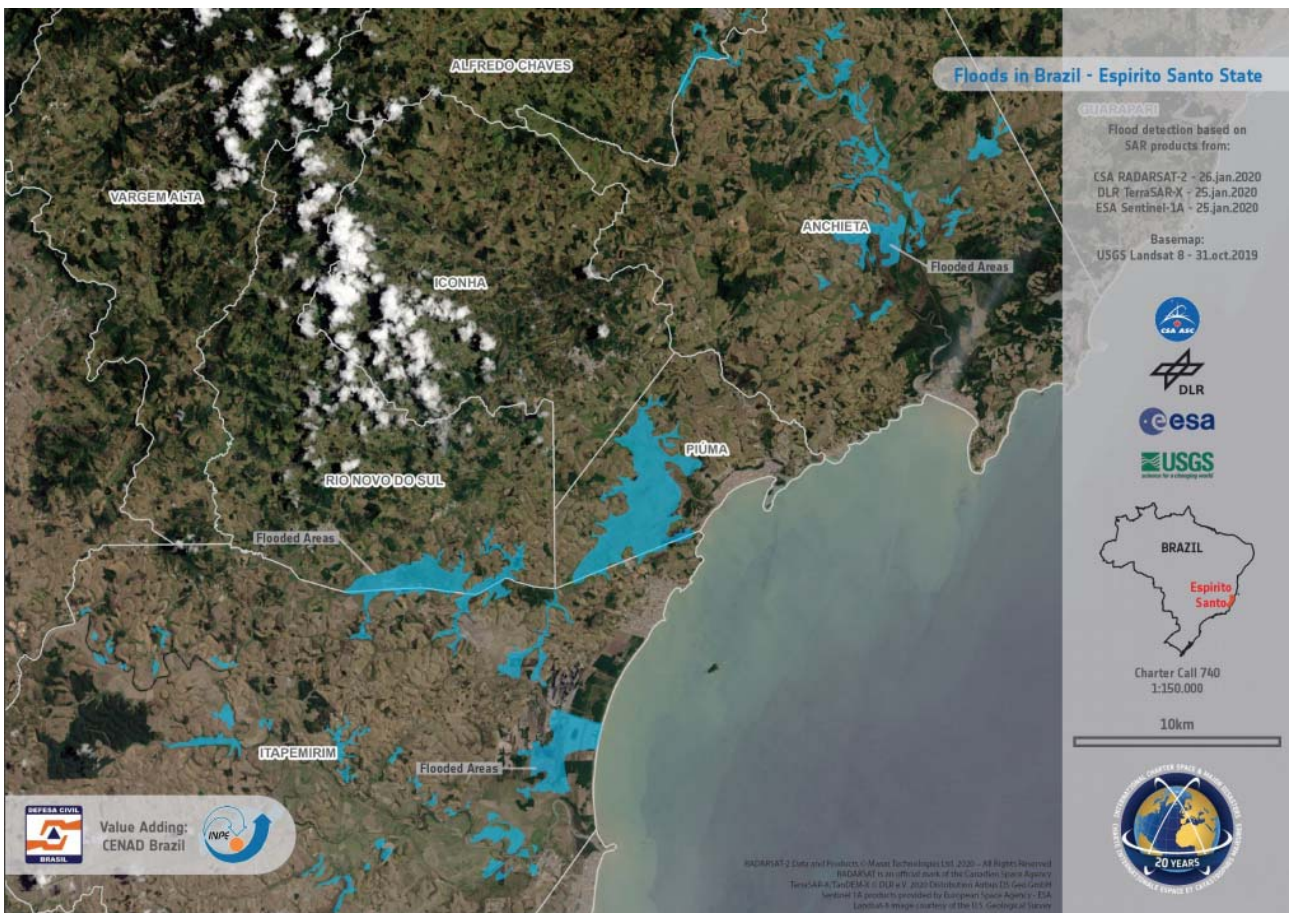


Precipitation



Source: NASA <https://gpm.nasa.gov/extreme-weather/heavy-rain-leads-flooding-brazil>

Flooded areas in Espirito Santo State as of Jan. 26,2020



Source: United Nations OCHA <https://reliefweb.int/map/brazil/flooded-areas-espírito-santo-state-brazil-26012020>



一般社団法人 国際建設技術協会
Infrastructure Development Institute - Japan